



London Central Portfolio Limited
Residential Funds and Asset Management

2 Bedroom Flat To Let

Wyndham Street, Marylebone - W1

£550 Per Week



2



2

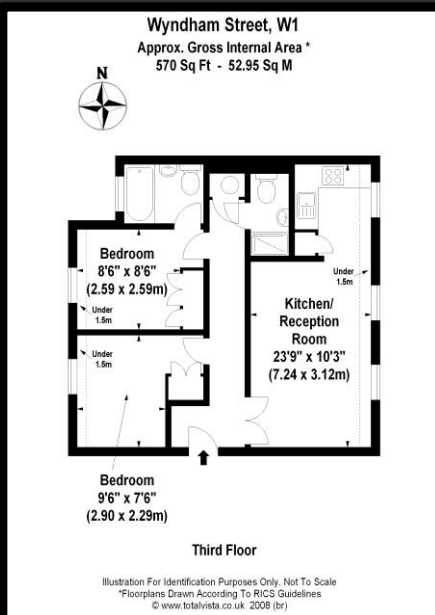


1



Marylebone

'A recently refurbished two bedroom, two bathroom flat in the heart Marylebone. The flat is close to the amenities of the West End and has easy access to the City and Canary Wharf via the Jubilee Line'



For more information contact Liam or Rob at LCP on 020 7723 1733

Property Acquisition ● Design & Refurbishment ● Letting & Rental Management ● Fund & Asset Management

London Central Portfolio Ltd, 116 Seymour Place, London W1H 1NW E: lcp@londoncentralportfolio.com Tel: +44 (0)207 723 1733