



LONDON CENTRAL PORTFOLIO
REAL ESTATE INVESTMENT ADVISORY

WESTBOURNE TERRACE,
BAYSWATER, W2

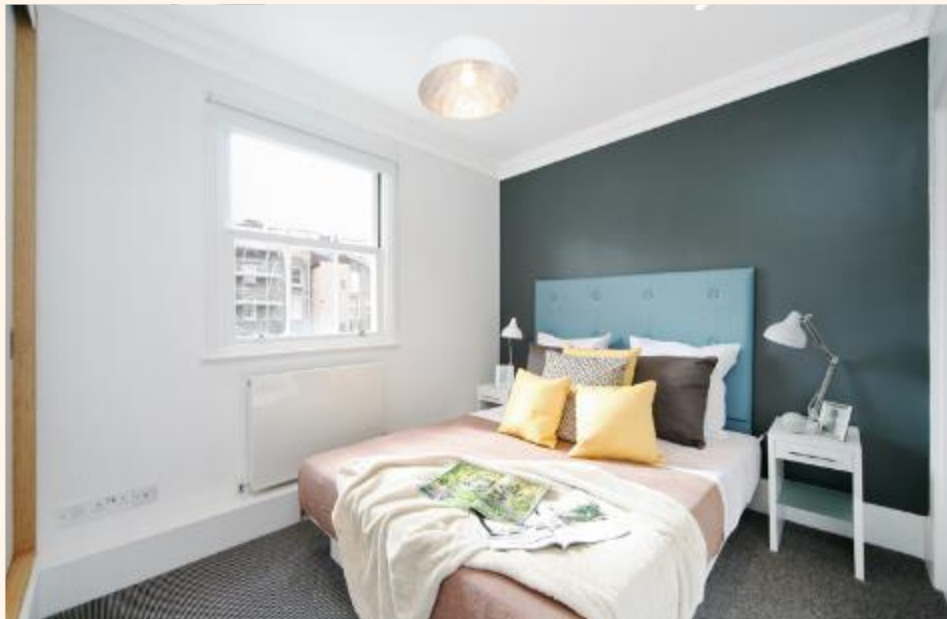
+44 (0) 207 723 1733
LETTINGS@LONDONCENTRALPORTFOLIO.COM

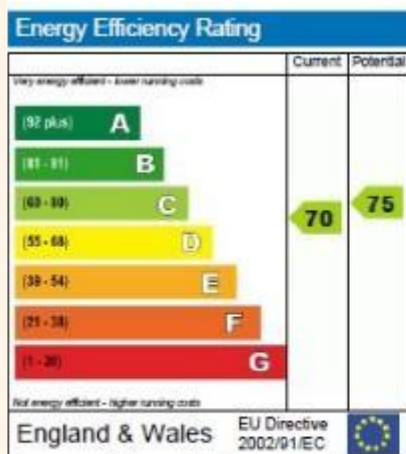
WESTBOURNE TERRACE, BAYSWATER, W2: £750 PER WEEK



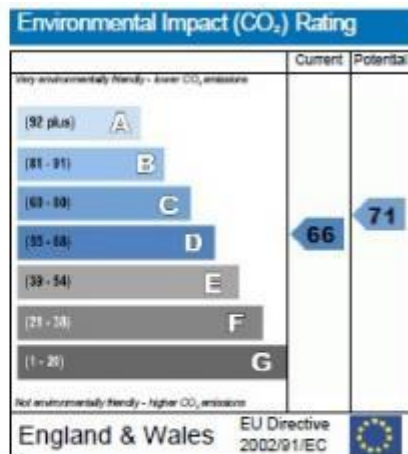
A RECENTLY REFURBISHED TWO BEDROOM FLAT LOCATED IN A PRESTIGIOUS PERIOD BUILDING WITH BALCONY IN THE HEART OF BAYSWATER. THIS BRIGHT AND SPACIOUS FLAT IS COMPLETE WITH FULL FURNISHINGS.

- ❖ TWO BEDROOMS
- ❖ 807 SQ FT
- ❖ SECOND FLOOR
- ❖ LIFT ACCESS
- ❖ FULLY FURNISHED





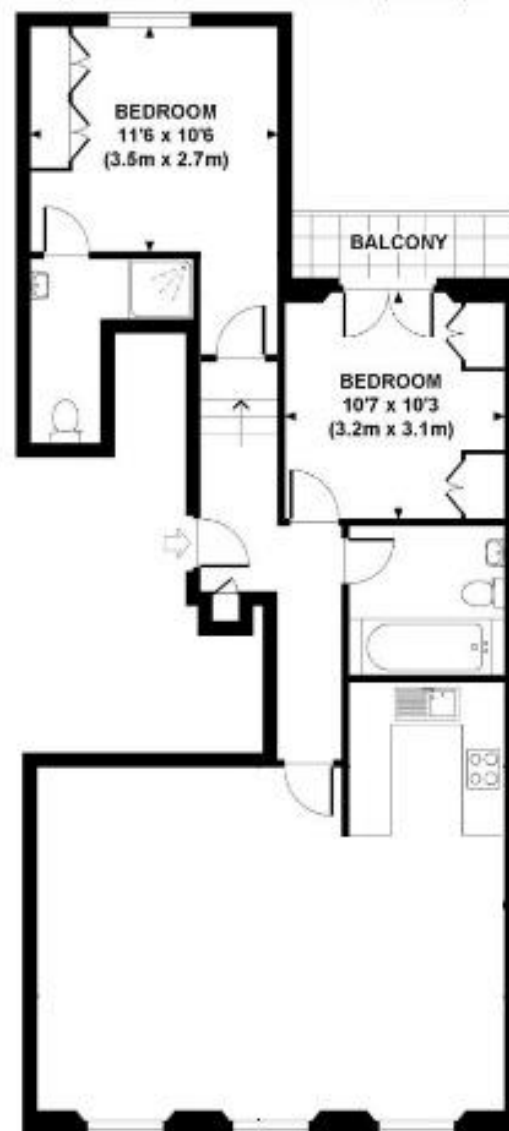
The energy efficiency rating is a measure of the overall efficiency of a home. The higher the rating, the more energy efficient the home is and the lower the fuel bills are likely to be.



The environmental impact rating is a measure of a home's impact on the environment in terms of carbon dioxide (CO₂) emissions. The higher the rating, the less impact it has on the environment.

WESTBOURNE TERRACE

Approximate Gross Internal Area 807 sq ft / 75 sq m



SECOND FLOOR GROSS INTERNAL FLOOR AREA 807 SQ FT

Although every attempt has been made to ensure accuracy, all measurements are approximate. The floor plans for illustrative purposes only and not to scale. Measured in accordance to RICS standards. DL4-1101/0004/P17Y/NET



LONDON CENTRAL PORTFOLIO
REAL ESTATE INVESTMENT ADVISORY



INVESTING IN CENTRAL LONDON

Acquisition • Design & Refurbishment • Letting & Rental Management • Fund & Asset Management
www.londoncentralportfolio.com • t: +44 (0)20 7723 1733 • e: lettings@londoncentralportfolio.com