



# LONDON CENTRAL PORTFOLIO

REAL ESTATE INVESTMENT ADVISORY

WESTBOURNE CRESCENT,  
BAYSWATER, W2

+44 (0) 207 723 1733  
[LETTINGS@LONDONCENTRALPORTFOLIO.COM](mailto:LETTINGS@LONDONCENTRALPORTFOLIO.COM)

## WESTBOURNE CRESCENT, BAYSWATER, W2: £750 PER WEEK



A RECENTLY REFURBISHED TWO BEDROOM FLAT LOCATED IN THE HEART OF BAYSWATER. THE PROPERTY IS LOCATED WITHIN SHORT WALK OF THE NATIONAL TRANSPORT LINKS OF PADDINGTON AND POPULAR NOTTING HILL AND SPACES OF HYDE PARK

- ❖ TWO BEDROOMS
- ❖ 749 SQ FT
- ❖ FOURTH FLOOR
- ❖ LIFT
- ❖ RECENTLY REFURBISHED

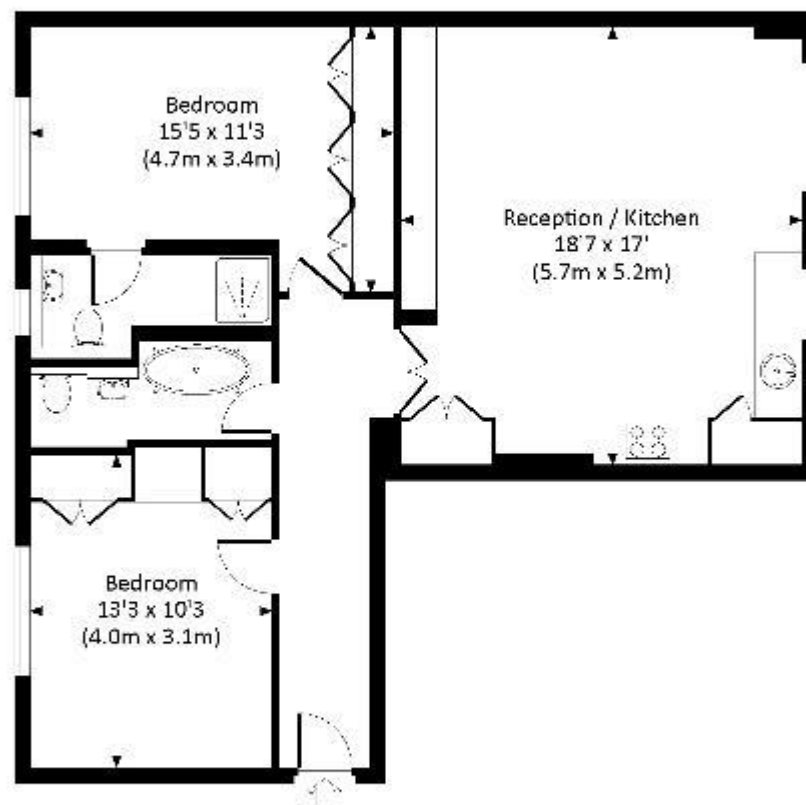






## WESTBOURNE CRESCENT, W2

Approx. gross internal area:  
794 Sq Ft. / 73.8 Sq M.



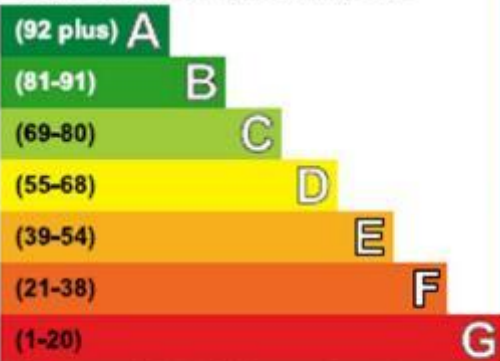
FOURTH FLOOR



All measurements have been made in accordance with the Code of Best Practice for Energy Rating of Buildings in Great Britain and Ireland. For the purposes of this Energy Rating, the following assumptions have been made: 1. All measurements have been made in accordance with the Code of Best Practice for Energy Rating of Buildings in Great Britain and Ireland.

## Energy Efficiency Rating

Very energy efficient - lower running costs



Not energy efficient - higher running costs

Current	Potential
61	82



## LONDON CENTRAL PORTFOLIO

REAL ESTATE INVESTMENT ADVISORY



---

# INVESTING IN CENTRAL LONDON

---

Acquisition • Design & Refurbishment • Letting & Rental Management • Fund & Asset Management  
[www.londoncentralportfolio.com](http://www.londoncentralportfolio.com) • t: +44 (0)20 7723 1733 • e: [lettings@londoncentralportfolio.com](mailto:lettings@londoncentralportfolio.com)