



LONDON CENTRAL PORTFOLIO  
REAL ESTATE INVESTMENT ADVISORY

THE WESTBOURNE,  
NOTTING HILL, W2

+44 (0) 207 723 1733  
[LETTINGS@LONDONCENTRALPORTFOLIO.COM](mailto:LETTINGS@LONDONCENTRALPORTFOLIO.COM)

# UPPER MONTAGU STREET, MARYLEBONE, W1H: £515 PER WEEK



A NEWLY REFURBISHED ONE BEDROOM FLAT ON THE THIRD FLOOR LOCATED IN THE HEART OF MARYLEBONE THIS BRIGHT AND SPACIOUS FLAT IS COMPLETE WITH FULL FURNISHINGS.

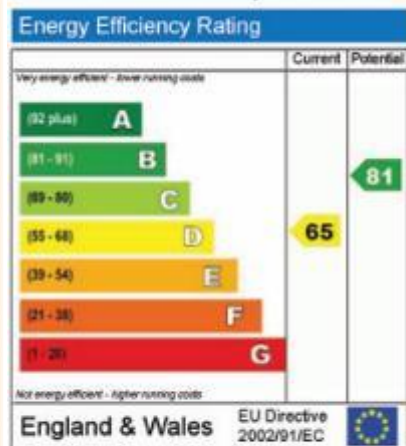
- ❖ ONE BEDROOM
- ❖ 421 SQ FT
- ❖ THIRD FLOOR
- ❖ NEWLY REFURBISHED



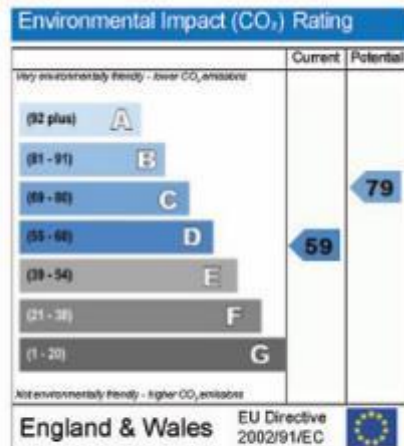




This home's performance is rated in terms of the energy use per square metre of floor area, energy efficiency based on fuel costs and environmental impact based on carbon dioxide (CO<sub>2</sub>) emissions.



The energy efficiency rating is a measure of the overall efficiency of a home. The higher the rating, the more energy efficient the home is and the lower the fuel bills are likely to be.



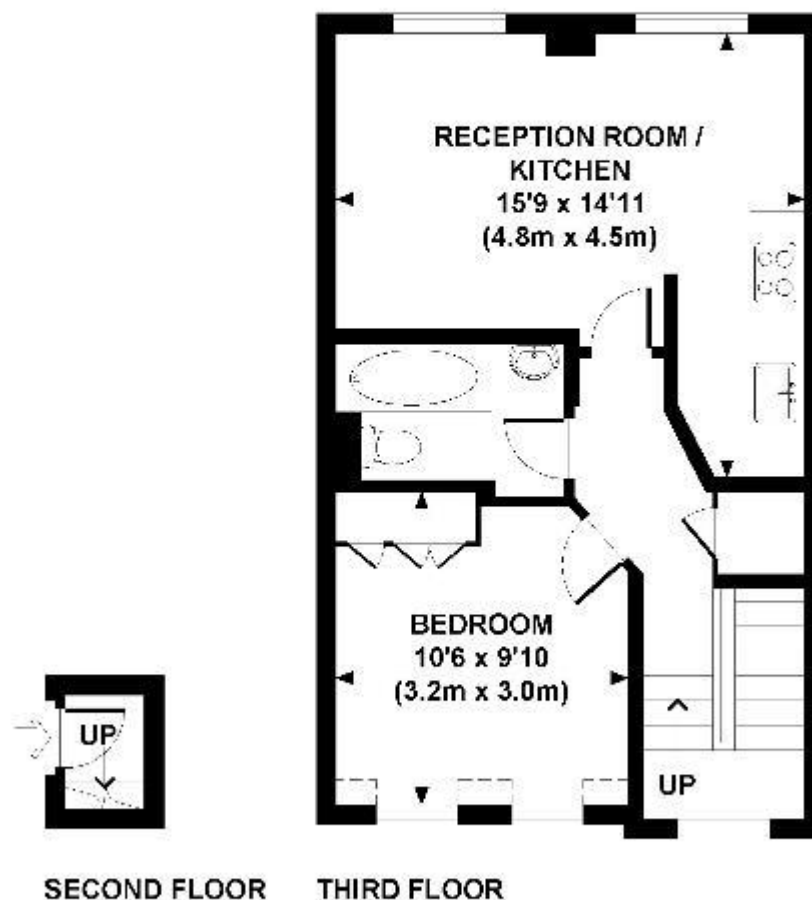
The environmental impact rating is a measure of a home's impact on the environment in terms of carbon dioxide (CO<sub>2</sub>) emissions. The higher the rating, the less impact it has on the environment.

## UPPER MONTAGU STREET, W1H

Approx. gross internal area

17 Sq. Ft. / 38.7 Sq. M

421 Sq. Ft. / 39.1 Sq. M. Inc. Restricted Height Area





LONDON CENTRAL PORTFOLIO  
REAL ESTATE INVESTMENT ADVISORY



---

# INVESTING IN CENTRAL LONDON

---

Acquisition • Design & Refurbishment • Letting & Rental Management • Fund & Asset Management  
[www.londoncentralportfolio.com](http://www.londoncentralportfolio.com) • t: +44 (0)20 7723 1733 • e: [lettings@londoncentralportfolio.com](mailto:lettings@londoncentralportfolio.com)