



LONDON CENTRAL PORTFOLIO
REAL ESTATE INVESTMENT ADVISORY

WARWICK CHAMBERS,
KENSINGTON, W8

+44 (0) 207 723 1733
LETTINGS@LONDONCENTRALPORTFOLIO.COM

WARWICK CHAMBERS, PATER STREET, KENSINGTON, W8: £515 PER WEEK



A NEWLY REFURBISHED ONE BEDROOM APARTMENT IN THE HEART OF KENSINGTON. THE FLAT FURTHER BENEFITS FROM THE NEARBY AMENITIES AND TRANSPORT LINKS OF KENSINGTON HIGH STREET

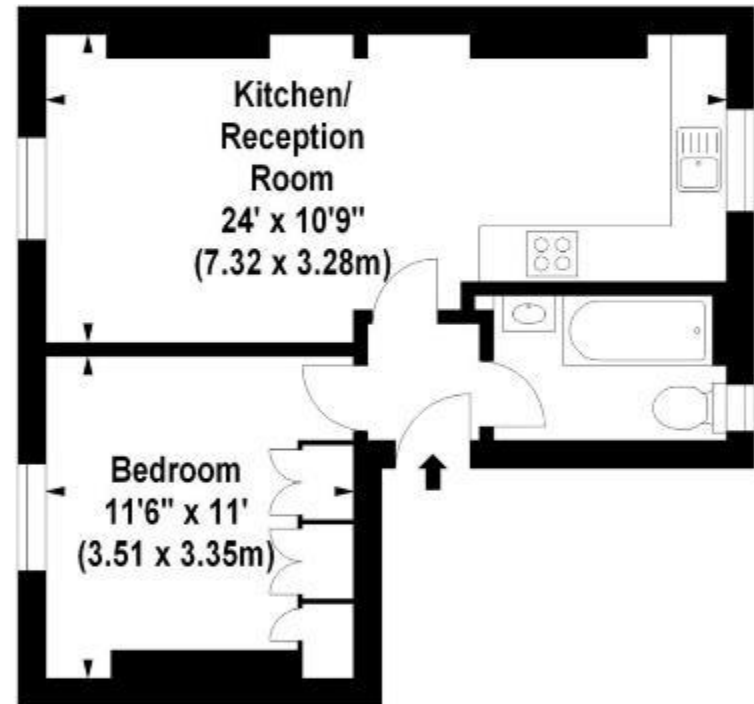
- ❖ RECENTLY REFURBISHED
- ❖ ONE BEDROOM
- ❖ 474 SQ FT
- ❖ FOURTH FLOOR
- ❖ LIFT





Warwick Chambers, Pater Street, W8

Approx. Gross Internal Area *
432 Sq Ft - 40.17 Sq M



Fourth Floor

Illustration For Identification Purposes Only. Not To Scale
*Floorplan Drawn According To RICS Guidelines
© www.totalvista.co.uk 2011 (aa)

Energy Efficiency Rating		Current	Potential
<small>Very energy efficient - lower running costs</small>			
(92 plus) A			
(81 - 91) B			
(69 - 80) C			
(55 - 68) D			
(39 - 54) E			
(21 - 38) F			
(1 - 20) G		10	10
<small>Not energy efficient - higher running costs</small>			
England & Wales	EU Directive 2002/91/EC		

The energy efficiency rating is a measure of the overall efficiency of a home. The higher the rating, the more energy efficient the home is and the lower the fuel bills are likely to be.

Environmental Impact (CO ₂) Rating		Current	Potential
<small>Very environmentally friendly - lower CO₂ emissions</small>			
(92 plus) A			
(81 - 91) B			
(69 - 80) C			
(55 - 68) D			
(39 - 54) E			
(21 - 38) F		25	26
(1 - 20) G			
<small>Not environmentally friendly - higher CO₂ emissions</small>			
England & Wales	EU Directive 2002/91/EC		

The environmental impact rating is a measure of a home's impact on the environment in terms of carbon dioxide (CO₂) emissions. The higher the rating, the less impact it has on the environment.



LONDON CENTRAL PORTFOLIO
REAL ESTATE INVESTMENT ADVISORY



INVESTING IN CENTRAL LONDON

Acquisition • Design & Refurbishment • Letting & Rental Management • Fund & Asset Management
www.londoncentralportfolio.com • t: +44 (0)20 7723 1733 • e: lettings@londoncentralportfolio.com