



LONDON CENTRAL PORTFOLIO

REAL ESTATE INVESTMENT ADVISORY

OAK TREE LODGE,
BAYSWATER, W2

+44 (0) 207 723 1733
LETTINGS@LONDONCENTRALPORTFOLIO.COM

OAK TREE LODGE, BAYSWATER, W2: £630 PER WEEK



A NEWLY REFURBISHED TWO/THREE BEDROOM FLAT LOCATED WITH GARDEN VIEWS IN THE HEART OF BAYSWATER. THIS BRIGHT AND SPACIOUS FLAT IS COMPLETE WITH FULL FURNISHINGS.

- ❖ TWO/THREE BEDROOMS
- ❖ TWO BATHROOMS
- ❖ 766 SQ FT
- ❖ THIRD FLOOR
- ❖ LIFT





Energy Efficiency Rating

Very energy efficient - lower running costs

(92 plus) **A**

(81-91) **B**

(69-80) **C**

(55-68) **D**

(39-54) **E**

(21-38) **F**

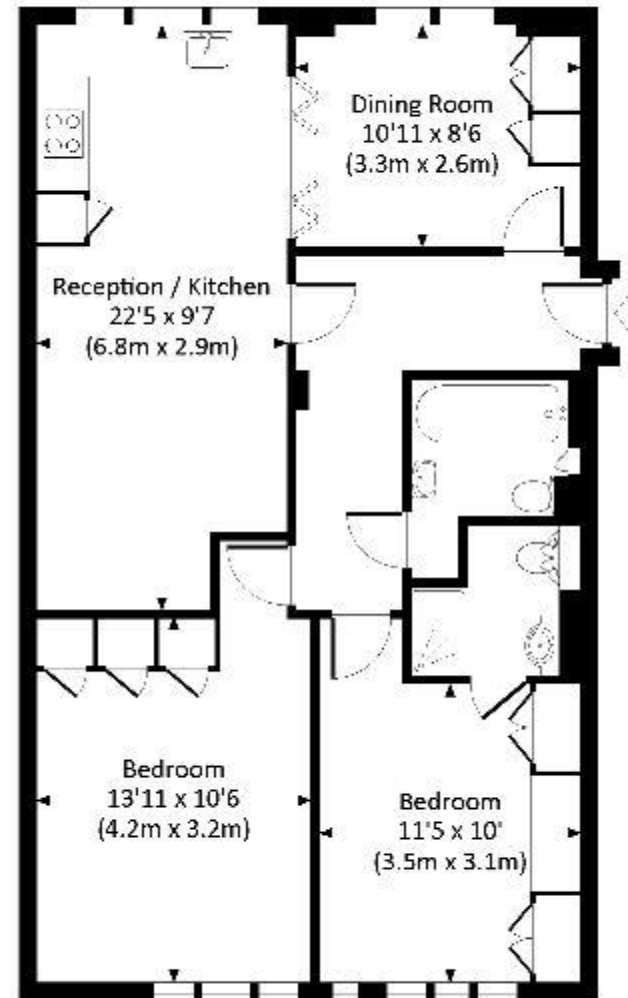
(1-20) **G**

Not energy efficient - higher running costs

Current	Potential
82	82

OAKTREE LODGE, LEINSTER GARDEN, W2

Approx. gross internal area
766 Sq Ft. / 71.2 Sq M.



THIRD FLOOR



All measurements have been made by a qualified surveyor. Accuracy of all measurements is not guaranteed. All measurements are approximate and should not be used for legal purposes. For more information, please contact the agent.



LONDON CENTRAL PORTFOLIO
REAL ESTATE INVESTMENT ADVISORY



INVESTING IN CENTRAL LONDON

Acquisition • Design & Refurbishment • Letting & Rental Management • Fund & Asset Management
www.londoncentralportfolio.com • t: +44 (0)20 7723 1733 • e: lettings@londoncentralportfolio.com