



## LONDON CENTRAL PORTFOLIO

REAL ESTATE INVESTMENT ADVISORY

JOHN ADAM STREET,  
WC2N

+44 (0) 207 723 1733  
[LETTINGS@LONDONCENTRALPORTFOLIO.COM](mailto:LETTINGS@LONDONCENTRALPORTFOLIO.COM)

## JOHN ADAM STREET, WC2N: £515 PER WEEK



A NEWLY REFURBISHED ONE BEDROOM FLAT LOCATED IN THE HEART OF LONDON NEAR THE STRAND. THIS LIGHT AND SPACIOUS FLAT IS COMPLETE WITH FULL FURNISHINGS AND OFFERS A MODERN, OPEN PLAN LOUNGE AND DINING AREA.

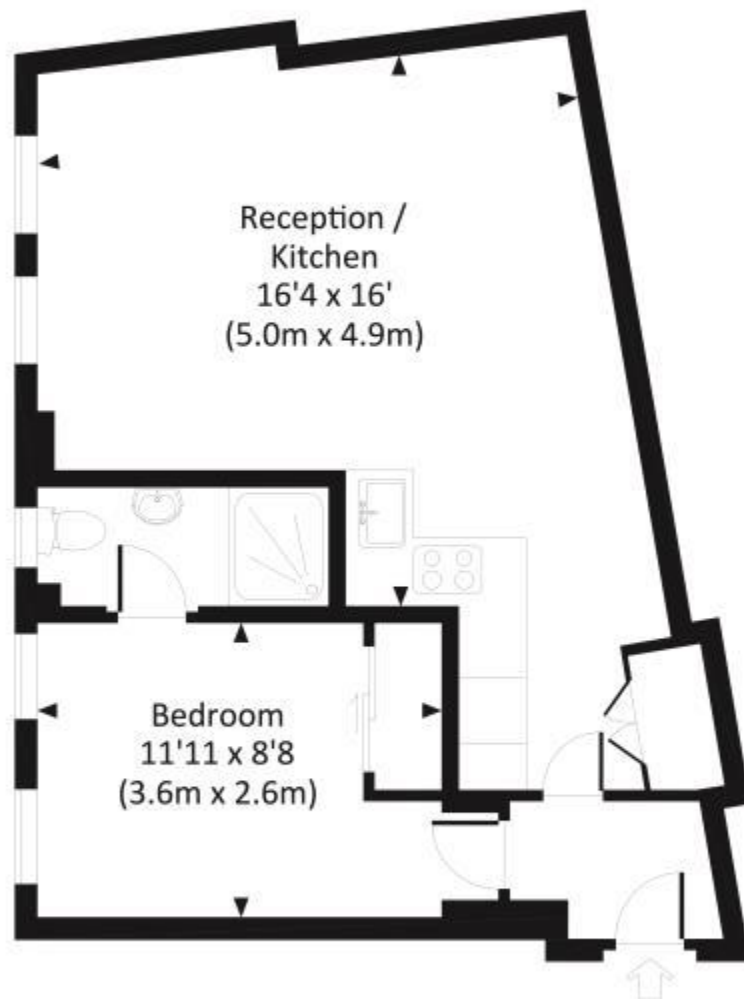
- ❖ ONE BEDROOM
- ❖ 460 SQ FT
- ❖ THIRD FLOOR
- ❖ LIFT
- ❖ NEWLY REFURBISHED





## JOHN ADAMS STREET, WC2N

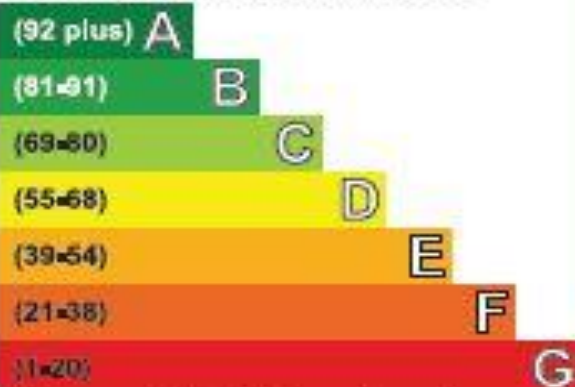
Approx. gross internal area  
460 Sq.Ft. / 42.7 Sq.M.



SECOND FLOOR

## Energy Efficiency Rating

Very energy efficient • lower running costs



Not energy efficient • higher running costs

Current	Potential
	72
35	





LONDON CENTRAL PORTFOLIO  
REAL ESTATE INVESTMENT ADVISORY



---

# INVESTING IN CENTRAL LONDON

---

Acquisition • Design & Refurbishment • Letting & Rental Management • Fund & Asset Management  
[www.londoncentralportfolio.com](http://www.londoncentralportfolio.com) • t: +44 (0)20 7723 1733 • e: [lettings@londoncentralportfolio.com](mailto:lettings@londoncentralportfolio.com)