



LONDON CENTRAL PORTFOLIO

REAL ESTATE INVESTMENT ADVISORY

GOODWOOD COURT
MARYLEBONE, W1W

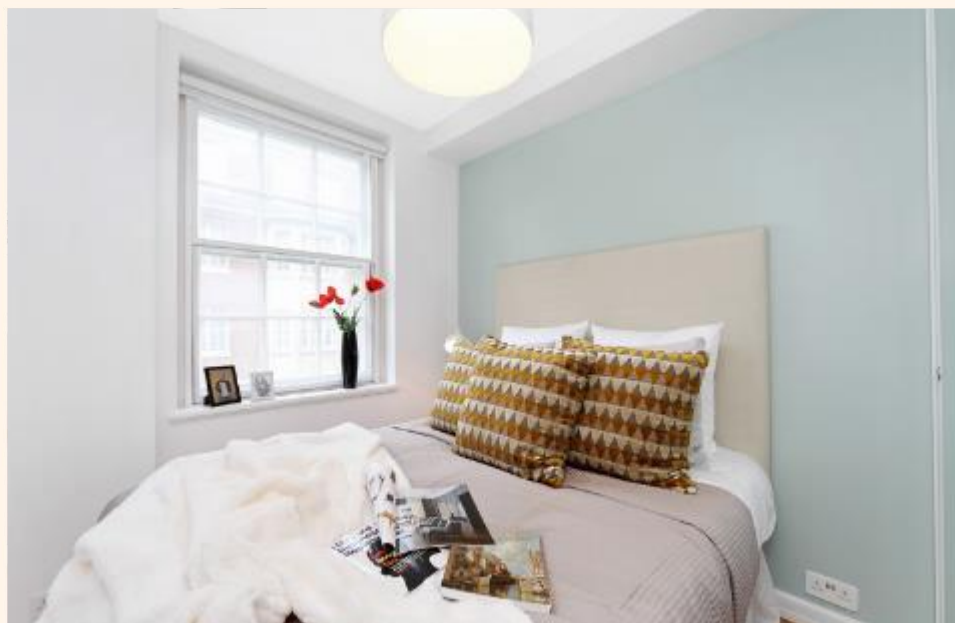
+44 (0) 207 723 1733
LETTINGS@LONDONCENTRALPORTFOLIO.COM

GOODWOOD COURT, MARYLEBONE, W1W: £515 PER WEEK



A NEWLY REFURBISHED ONE BEDROOM FLAT LOCATED IN A PRESTIGIOUS BUILDING WITH PORTER IN THE HEART OF MARYLEBONE. THIS BRIGHT AND SPACIOUS FLAT IS COMPLETE WITH FULL FURNISHINGS

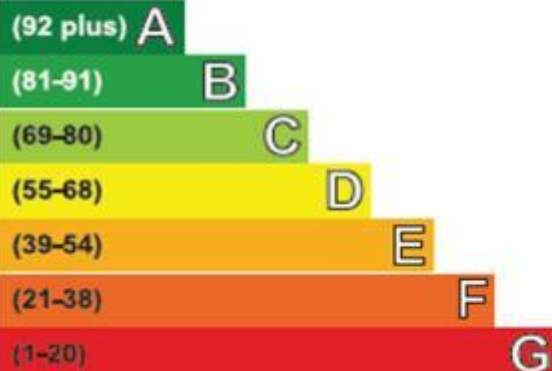
- ❖ ONE BEDROOM
- ❖ 423 SQ FT
- ❖ SECOND FLOOR
- ❖ PORTER
- ❖ LIFT





Energy Efficiency Rating

Very energy efficient - lower running costs

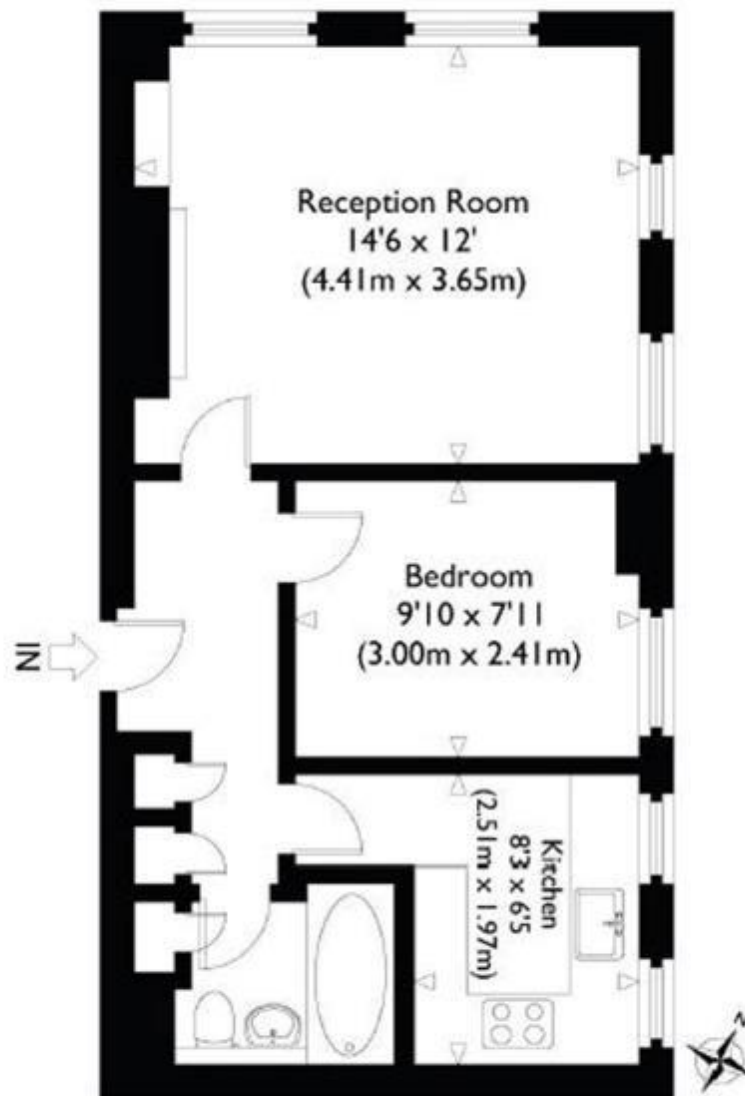


Not energy efficient - higher running costs

Current	Potential
66	78

Devonshire Street, W1

Approximate Gross Internal Floor Area : 423 sq ft / 39.3 sq m



Second Floor



LONDON CENTRAL PORTFOLIO
REAL ESTATE INVESTMENT ADVISORY



INVESTING IN CENTRAL LONDON

Acquisition • Design & Refurbishment • Letting & Rental Management • Fund & Asset Management
www.londoncentralportfolio.com • t: +44 (0)20 7723 1733 • e: lettings@londoncentralportfolio.com